

IT Infrastructure Management

- > Advanced IT Management, monitoring, alerting, offline logs, out of band access
- > Manage servers, switches, routers, firewalls, SAN with serial console ports
- > Access blade servers via IPMI or lights out cards over secure management LAN
- > Provide network separation and IP address handling for management LAN
- > Programmable Linux for easy scripting and customization
- > No software to load on host, complete package for total IT Management

Total Power Management

- > Manage all UPS systems and RPC connections from one appliance
- > 100% compatible with Eaton Powerware, MGE, and dozens more
- > Serial, USB and Network/SNMP connectivity for UPS and RPC
- > Simple Web Interface - Logging, Alerting, Monitoring, Real Time Graphing
- > Drop in solution - Manage competitors equipment at existing installs

Environmental Monitoring

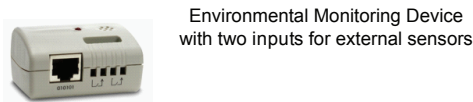
- > Manage Environmental Sensors from a single appliance and web console
- > Logging, alerts and graphing for disaster recovery and audit trail
- > Manage temperature, humidity, door contacts, water, smoke, vibration
- > 100% compatible with Eaton environmental sensors and monitoring probes



**4 Port Console Server and
4 Port VLAN Switch
In the same box.**



Finalist 2008
"Best Management Tool"



Environmental Monitoring Device
with two inputs for external sensors

Access via Internet

Dial in Out of Band

Automatic Failover

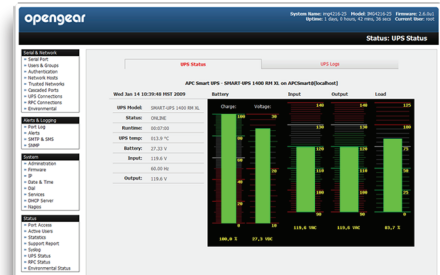
Product Snapshot:

- 4 Serial Ports
- Primary Ethernet Interface
- 4 VLAN Ethernet Ports
- PCMCIA Slot
- 1 Gig internal Flash
- Clustering 1000 Per IP
- Programmable Linux
- PowerMan
- Network UPS Tools
- IPMI Server Reboot
- Manage Service Processors
- Pattern Match Alerting
- Nagios Checks

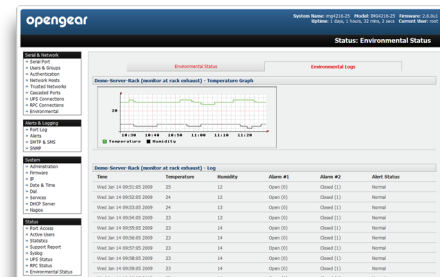
Benefits

- > Consolidate management of UPS systems using a single IP connection
- > Slash costs by reducing or eliminating SNMP management cards
- > No management software to install on dedicated server computer
- > Simple browser and terminal access with strong authentication and encryption
- > Ensure Uptime, Emergency Out of Band access via broadband or dial up
- > One solution for IT management, Environmental Monitoring and Power Management

Embedded with Network UPS Tools



Simple Browser Interface



Security and Authentication

- Secure Shell (SSH V2)
- AAA TACACS+, RADIUS and LDAP authentication
- PAP/CHAP authentication (dial up)
- Per port user access lists and dial back support
- Local authentication
- System event Syslog
- SSH port and IP forwarding support, IP aliasing
- IP packet filtering, IPV6

Serial Console Port Management

- Windows 2003 Server EMS support
- SUN / Solaris ready (no inadvertent breaks)
- Break over SSH support
- Port monitoring, triggers and alarms
- Offline data logging (Syslog, NFS, CIFS)
- Online data buffering
- Multiple users per port (with port sniffing)
- Telnet/SSH/Raw/RFC2217 TCP connect
- Clustering up to 1000 ports per IP

Tunneled LAN Port Management

- Secure SSH tunneling and NAT port redirection
- Secure RDP/VNC/X access to Windows /Linux/Sun
- Secure HTTP/HTTPS to browser controlled appliances
- Secure Telnet /SSH access
- Service processor access (IPMI, ILO, LOM, RSA)
- Extensible to support custom services /ports
- Configurable point-n-click SDTConnector client
- User access limited by host, and by SDT service
- Unlimited number of LAN computers/appliances
- Unlimited number of connections per SSH session

Power Management

- Embedded Network UPS Tools & PowerMan
- UPS/RPC monitoring, graphing, alarms
- Connect Serial and USB connected UPS/RPC

IM4004-5 System Management

- Secure Web management (HTTP, HTTPS)
- Store config on removable USB Flash
- Command Line interface (Linux Shell)
- ARP-PING (IP assignment)
- SNMP, SMS, and email alerts

Other Protocols Supported

- DHCP for dynamic IP assignment
- NTP for time synchronization
- PPP for dial up access
- NAT port redirection
- RFC2217- Port Redirection
- Network UPS Tools

Upgrades

- Flash upgradeable - free from online FTP site
- FTP, TFTP client for file transfer



Models

- IM4004-5
- 4 serial ports (R-J45 RS-232)
- 5 Ethernet ports (RJ-45 10/100Base-T)
- 2 USB-2 Port

Cables Included

- 2 RJ-45 CAT5 cables (6 ft)
- 2 RJ-45 to DB-9 adapters (straight & cross-over)

Environmental

- Ambient operating: 5°C to 50°C (41°F to 122°F)
- Storage: -30°C to +60°C (-20°F to +140°F)
- Humidity: 5% to 90%

Regulatory

- FCC Part 15 A UL 1950 TUV C-Tick
- CE (EN55022 A, EN55024, EN60950) ROHS

Power, Size & Weight

- External 100-240V AC 50/60 Hz to 5V DC
- Power Consumption less than 15W
- 8.2 x 4.9 x 1.2 in (21 x 12 x 3.2 cm) 3.7 lb (1.7 kg)

CPU/Memory

- 166MHz ARM (Micrel KS8695P)
- 64MB SDRAM
- 16MB Embedded
- 4B local flash for custom code

MTBF

IM4004-5: 150,000



USA	UK	EU	RS-232 Ports	Ethernet Ports	PCMCIA	USB	Warranty
IMG4004-5-US	IMG4004-5-UK	IMG4004-5-EU	4	5	1	1	1 Year