

Opengear console servers are designed to interact with the Eaton™ Remote Power Control units and provide remote power management and reboot both In-Band and Out-of-Band from one simple interface. Opengear console servers have evolved into the “best of breed” power management solution with leading edge technology in infrastructure management.

Systems administrators now have one window to manage all their IT, power and environmental infrastructure no matter where it is located or how it is connected. Opengear console servers control the widest selection RPC and UPS devices and provide power metering at the managed device level with outlet control. No other vendor logs and alarms on temp readings from such a spectrum of sources in the data center. We do this all in band or out of band while retaining affordability.



Access via Internet

Dial in Out of Band

Automatic Failover



Integrated Hotkey function to power cycle from Telnet/SSH Session

Centralized Power Management

- 100% Compatible with Eaton® UPS and PDU's
- Serial, USB and Network/SNMP for UPS and PDU connectivity
- Simple Web Interface - Logging, Alerting, Monitoring, Real Time Graphing
- Drop in solution - Manage multiple vendor's equipment at existing installs

IT Infrastructure Management

- Manage servers, switches, routers, firewalls, SAN with serial console ports
- Access blade servers via IPMI or lights out cards over secure management LAN
- Provide network separation and IP address handling for management LAN
- Programmable Linux for easy scripting, perfect for Cloud and Grid computing

Environmental Monitoring

- Manage Environmental Sensors from a single appliance and web console
- Logging, alerts and graphing for disaster recovery and audit trail
- Manage temperature, humidity, door contacts, water, smoke, vibration
- 100% compatible with Eaton environmental sensors and monitoring probes



Supported Eaton® UPS

- Powerware**
 3105 500-700 VA UPS
 5110 500-1500 VA UPS
 5115 500-1400 VA UPS
 5115RM 500-1500 VA UPS
 5125 1000-2200 VA UPS
 5130 1250-3000 VA UPS
 5125RM 1000-6000 VA UPS
 9120 700-3000 VA UPS
 9125 700-6000 VA UPS
 Eaton 9130 700-3000 VA UPS
 9125 RM 700-6000 VA UPS
 Eaton 9135 5-6 kVA UPS
 9140 7.5-10 kVA UPS
 9155 8-15 kVA UPS
 9170+ 3-18 kVA UPS
 9170+RM 3-18kVA UPS
 FERRUPS UPS 500 VA - 18 kVA UPS
 FERRUPS RM UPS 850VA-7kVA UPS
 BladeUPS Power System
 9355 UPS

EATON MGE

- Evolution**
 650/850/1150/1550/2000
 1250/1750/2500/3000

- Pulsar**
 700/1000/1500 VA

- PulsarEX RT**
 700/1000/1500/2200/3200 VA

- Pulsar M**
 2200/3000 VA

- Pulsar MX**
 5 to 20 kVA

- EX RT**
 5/7/11 kVA

- Comet EX RT**
 7/11 kVA single phase input / output
 5/7/11 kVA three phase input / output

- EOL EATON**
 BEST Power UPS

Supported Eaton® PDU

- Ampmeter PDU**
 12 V / 68 140
 12 NM 2U / 68 152
 56147
 56148

- Switched PDU**
 8 NM 1U / 68 130
 16 V NM / 68 134
 56132
 56136
 56138

- Pulsar STS**
 STS 16, STS

- ePDU**
 ME Metered
 MO Monitored Serial
 MI Monitored Network
 SW Switched
 MA Managed

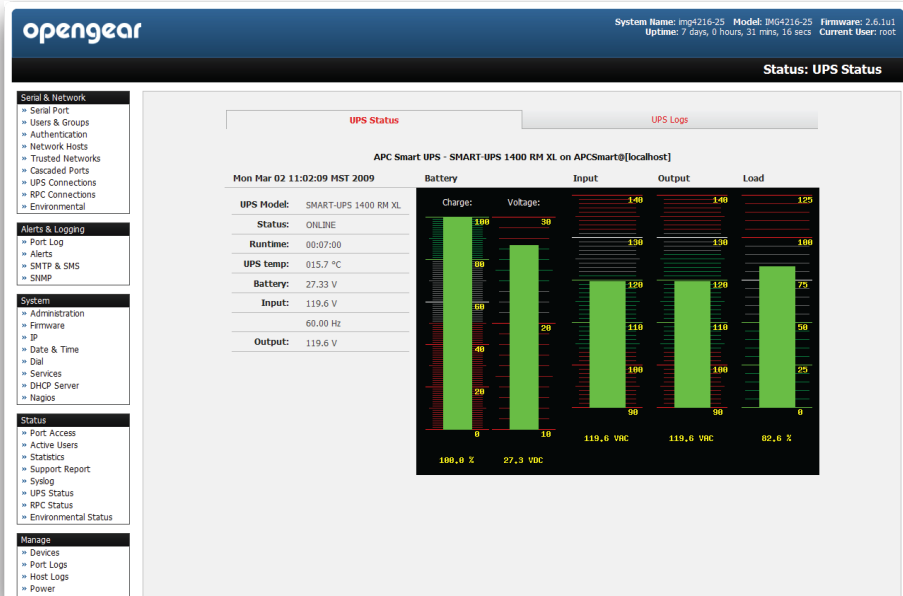
If you have an EATON product that is not listed here, please contact your Opengear Sales Team for help

Eaton
 8609 Six Forks Road
 Raleigh, NC 27615 U.S.A.
 Toll Free: 1 800 356 5794
 International: 1 919 872 3020
 Email: powerware@eaton.com

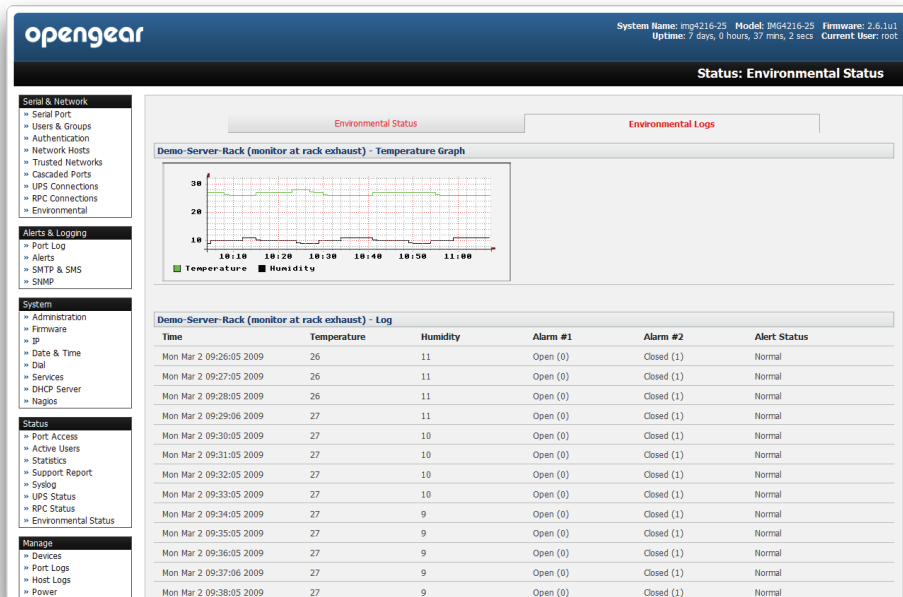
How it works:

The power management in Opengear's console servers is built on Network UPS Tools, an extremely powerful and versatile collection of programs for monitoring and administering UPS hardware. The open source Network UPS Tools project is sponsored by Eaton (PowerWare/MGE) and it now also supports Power Distribution Units (PDU) management, either natively using SNMP or through a binding to Powerman. Opengear's Console Servers also embed the PowerMan programs from Livermore Labs, which control serial and network connected PDUs. Both these trusted open source solutions are extensively deployed in major enterprise data centers around the world.

Simple Browser or Terminal Interface



Real Time Graphing, Logs and Alerting



opengear Power Management is included with:

CM4100
 Console Server

IM4200
 Infrastructure Manager

IMG4000
 Management Gateway

KCS6000
 KVM Console Server